

Empowered by Innovation



NEC Display Solutions

NEC SHOWCASE 2012

RETAIL | DOOH | EDUCATION | PROFESSIONAL OFFICE | 3D & LEISURE | NEC INNOVATION | TRANSPORT



SHOWCASE 2012

NOVATIONS DISPLAYS SOLUTIONS
LUTIONS INNOVATIONS DISPL

WELCOME TO | THE NEC SOLUTIONS SHOWCASE



Welcome to The O2! Since its re-opening in 2008, NEC has enjoyed an established partnership with The O2 and we are delighted to be able to bring you to Greenwich in this Olympic year. Our location encapsulates a number of 'live' NEC customer sites as well as providing a tempting opportunity to view the Olympic Park in the final lead up to the UK's premier sporting event.

Reflecting on the previous 12 months since our last Showcase at Battersea, we've continued to evolve as a company, leading the way in product innovation and market specialisation. New to the Showcase this year are the Retail and Transport Zones, both with a wide array of exciting solutions, some already in use, others conceptual but like all the zones, it's the partners that help make the product a solution and the combined talents of our integrators that make it a reality.

This is where the Showcase is driving the industry, striving for innovation through collaboration. This was indeed borne out following last year's Showcase where new opportunities were developed, leading to new technology solutions. We've won several industry awards too, so it's nice to know other people think we are on the right track as well.

The Showcase is also a great chance to network and again this year we are teaming up with 'The Screen' to provide two briefing sessions which I'm sure you will find of interest. So please make the most of everything you see today and as always, thank you for your support.

SIMON JACKSON, VICE PRESIDENT
NEC DISPLAY SOLUTIONS



AGENDA | NEC SHOWCASE 2012



NEC SHOWCASE 2012 | The Bubble

10:00 Showcase Opens

12:00 - 14:00 Lunch

18:00 Showcase Closes

THE SCREEN BRIEFINGS | Cineworld Cinema

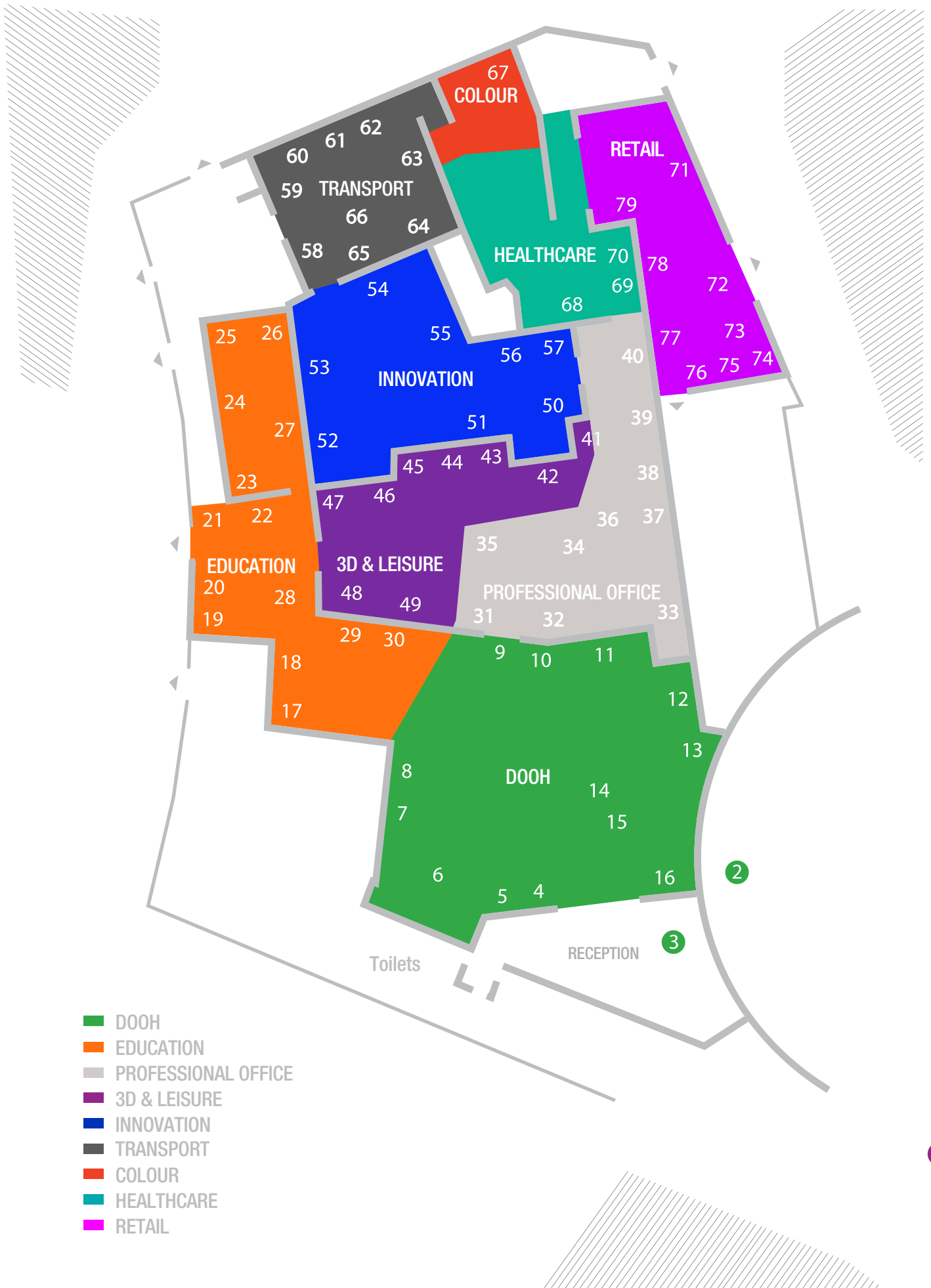
11:00 - 12:30 A Digital Journey

Screen 2

14:00 - 15:30 Digital Engagement; The Techniques

- Augmented Reality
- The World According to 3D
- Mobile Interaction

Screen 2



- DOOH
- EDUCATION
- PROFESSIONAL OFFICE
- 3D & LEISURE
- INNOVATION
- TRANSPORT
- COLOUR
- HEALTHCARE
- RETAIL




DOOH	3D holographic projection [entrance]	2
	Giant iTab [entrance]	3
	Multi-touch	4
	Facial recognition	5
	Virtual mannequin & Go-Dome	6
	Intelligent video wall - 2 x 2 Landscape	7
	Collage video wall	8
	Creative video wall	9
	Video wall - 4 x 4 Portrait	10
	Pixel mapping	11
	Indoor LED	12
	Vukunet ad-serving platform	13
	High-end projection	14
	Edge blending	15
	Integrated digital signage	16

EDUCATION	Interactive gaming	17
	Multi-media touch	18
	Collaborative learning	19
	Collaborative learning	20
	Video annotation	21
	Digital signage - Linux based	22
	Interactive learning	23
	Digital signage - Primary Education	24
	Lecture capture	25
	Interactive 3D	26
	Digital signage media player	27
	Interactive touch table	28
	Digital signage - Serverless	29
	Digital signage - Interactive web-based	30

PROFESSIONAL OFFICE	Collaborative video wall - 2 x 2 Landscape	31
	Integrated routing control	32
	Meeting room of the future	33
	Digital signage - Coaxial	34
	Trade floor deskings	35
	Interactive whiteboard	36
	Workplace collaboration	37
	IPTV	38
	iPad controlled VC Signage Solution	39
	Interactive collaboration	40

3D & LEISURE	BA flight simulator [entrance]	1
	IP streaming	41
	Digital signage - Web-based	42
	Glasses free 3D	43
	Passive 3D	44
	Active 3D	45
	Gesture control	46
	Horizon screen	47
	Video wall - 10 x Screen	48
Photo booth	49	

NEC INNOVATION	Multi-touch way-finding	50
	Projector apps	51
	Video wall processor - 2 x 2 Landscape	52
	Multi-touch	53
	Eccentric video wall - 6 x Screen	54
	Transparent displays	55
	Brochure knowledge bank	56
Monitoring and control	57	

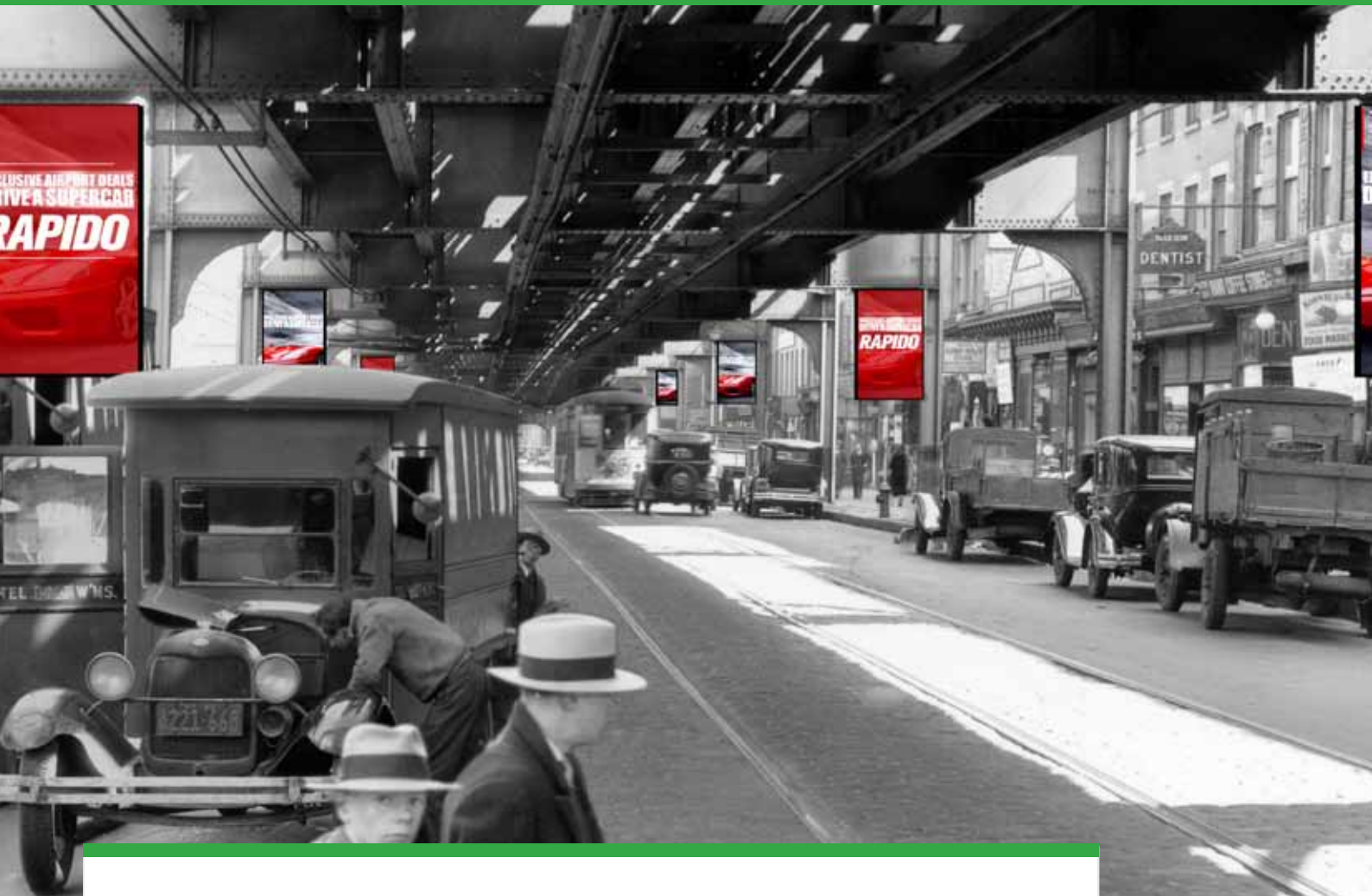
TRANSPORT	Flight information display	58
	Airport digital signage	59
	Facial recognition	60
	Check-in security	61
	Crowd Management	62
	Mobile flight information - 3 x 3 Landscape	63
	Customer flow management	64
	Integrated digital signage totem	65
	Baggage control	66

COLOUR	Colour workflow	67
--------	-----------------	----

HEALTHCARE	Diagnostic & review displays	68
	Bed management	69
	Doctor/patient call	70

RETAIL	Interactive video wall - 3 x 2 Landscape	71
	Gesture control and AR	72
	QSR (Quick Service Restaurant) signage	73
	3D virtual dressing room	74
	Delay mirror	75
	Window interactive touch	76
	Interactive signage with Shazam	77
	Intelligent signage	78
Multi-touch video wall - 1 x 3 Landscape	79	

DOOH | ZONE FEATURES



DOOH Solutions

	Solution	Partner
3D HOLOGRAPHIC PROJECTION [ENTRANCE]	2	Wonderworks
GIANT ITAB [ENTRANCE]	3	Mentor, Touch2view
MULTI-TOUCH	4	Chief, Mentor
FACIAL RECOGNITION	5	Intel
VIRTUAL MANNEQUIN & GO-DOME	6	NexNix
INTELLIGENT VIDEO WALL - 2 x 2 LANDSCAPE	7	AMX, Chief
COLLAGE VIDEO WALL	8	OneLAN
CREATIVE VIDEO WALL	9	Scala
VIDEO WALL - 4 x 4 PORTRAIT	10	Matrox, PSCo
PIXEL MAPPING	11	WSP
INDOOR LED	12	NEC
VUKUNET AD-SERVING PLATFORM	13	Chief
HIGH-END PROJECTION	14	NEC
EDGE BLENDING	15	NEC
INTEGRATED DIGITAL SIGNAGE	16	Harp

DOOH | ZONE FEATURES

Digital-Out-Of-Home (DOOH) advertising is a market that is growing rapidly. Operators of digital signage networks, location owners, media agencies and brands are looking for more dynamic solutions and methods to deploy applications that are driven by market and users' needs.

On the bottom line, media owners monetise viewings irrespective of the medium used, allowing multiple avenues for viewing. The digital format offers huge benefits to all, such as the ability to provide topical, moving content in a timely, targeted fashion, with interactivity allowing deeper engagement whilst providing a richer experience for the audience. Ultimately, the reason for the innovation is to make the content more engaging, to provide a verifiable targeted audience to paying advertisers.

2

3D HOLOGRAPHIC PROJECTION [ENTRANCE] | WONDERWORKS

Wonderworks is presenting The VISTA™, a unique large-scale 3D holographic projection unit using the NEC PX750U, which offers portable window, in-store and exhibition visual merchandising solutions.

3

GIANT ITAB [ENTRANCE] | MENTOR, TOUCH2VIEW

The Giant iTab from Touch2view is presenting an interactive NEC Showcase showguide allowing visitors to view Partner profiles and explore a fully interactive floor plan. Mentor Distribution's 55" optical sensing dual touch display using an NEC V551 is built into Touch2View's Giant iTab enclosure.

4

MULTI-TOUCH | CHIEF, MENTOR

Mentor Distribution showcases its new LaserTouch technology built into the NEC 55" P551 display mounted on a Chief PFCU mobile cart. Snowflake suite for Windows 7 is used to demonstrate this technology's multi-touch / multi-user capability.

5

FACIAL RECOGNITION | INTEL

Intel demonstrates the capabilities of the Intel® AIM Suite in the Crystal CS demo where it runs concurrently with Crystal CG software. The demonstration, using an NEC 55" X551S display on a Unicol stand, detects a face and plays an animation depending on the age group the AIM has judged the person to be. Visitors can download their photo onto their Smartphone by using the displayed QR code.

6

VIRTUAL MANNEQUIN & GO-DOME | NEXNIX

NexNix's Virtual Mannequin, a life-size projection of a person, welcomes visitors to the NEC Showcase using an NEC P420X projector. Nexnix presents the Go-Dome™, a portable planetarium dome theatre with mirror projection equipment for an immersive presentation experience using an NEC PX750U projector and an NEC PX800U projecting outside the Dome, emulating content inside.

7

INTELLIGENT VIDEO WALL | AMX, CHIEF

AMX signage welcomes visitors to the DooH lounge using a 2x2 NEC 46" X462UN video wall mounted using Chief Fusion™ micro-adjustable pull-out mounts. Intelligent digital signage uses sensor triggers with iPad content control.

8

COLLAGE VIDEO WALL | ONELAN

OneLAN demonstrates the flexibility of its video wall solution which allows content to change orientation. Four NEC 46" P462 displays are arranged in both portrait and landscape orientation, each running at its native resolution, driven by DataPath.

9

CREATIVE VIDEO WALL | SCALA

Eight NEC 46" X462UN displays, mounted on PETA stands, are arranged in a creative array to form an arch. Content by Scala has been custom designed for this arrangement and visitors can utilise QR codes via their Smartphones to enter a competition to win an iPod nano, sponsored by NEC. Additional content includes demonstrations of social media integration such as Twitter, LinkedIn and Facebook.

10

VIDEO WALL | MATROX, PSCO

PSCo Technical Distribution has created an iconic four and a half-metre portrait video wall using sixteen new NEC 46" X463UN direct LED backlit ultra-narrow bezel displays. Mounted on bespoke PSCo brackets, the video wall is driven by a combination of Harris Infocaster™ players and high-performance Matrox Mura video wall controllers to enable each display to be driven at its full native resolution of 1080p.

11

PIXEL MAPPING | WSP

White Space Productions demonstrates its pixel mapping solution to project moving images of NEC products and animations onto a large scale model of Marble Arch using an NEC PA600X installation projector.

12

INDOOR LED | NEC

NEC showcases its 6mm indoor LED solution driven by an NEC distributor and processor, integrated by VTL.

13

VUKUNET AD-SERVING PLATFORM | CHIEF

An NEC 55" V551 display mounted on a Chief PFCU mobile cart is displaying content relating to the NEC Vukunet Ad Serving platform.

14

HIGH-END PROJECTION | NEC

NEC is showcasing its new high end 3-Chip WUXGA installation projector, the PH1000U, delivering 11,000 ANSI lumen with OPS compatibility.

15

EDGE BLENDING | NEC

NEC demonstrates Edge Blending using two NEC WUXGA PA500U installation projectors.

16

INTEGRATED DIGITAL SIGNAGE | HARP

Harp demonstrates its integrated digital signage solution in a standalone totem configuration using NEC 55" X551S displays with LED backlight technology within robust IP65 enclosures. The Harp solution showcases the latest interactive technologies including touch, gesture control, NFC and facial recognition.



EDUCATION Solutions

	Solution	Partner
INTERACTIVE GAMING	17	FUTURESoftware, U-Touch
MULTI-MEDIA TOUCH	18	SMS, U-Touch
COLLABORATIVE LEARNING	19	CBS, DisplayNote, TeamMate
COLLABORATIVE LEARNING	20	Extron, TeamMate
VIDEO ANNOTATION	21	DisplayLite, Extron, LifeSize, TeamMate
DIGITAL SIGNAGE - LINUX BASED	22	OneLAN, Peerless
INTERACTIVE LEARNING	23	DisplayLite, SMART, TeamMate
DIGITAL SIGNAGE - PRIMARY EDUCATION	24	Peerless, Sedao
LECTURE CAPTURE	25	Crestron, Peerless, TeamMate
INTERACTIVE 3D	26	SMS, WSP
DIGITAL SIGNAGE MEDIAPLAYER	27	Peerless, VisionPoint,
INTERACTIVE TOUCH TABLE	28	SMS
DIGITAL SIGNAGE - SERVERLESS	29	FUTURESoftware
DIGITAL SIGNAGE - INTERACTIVE WEB BASED	30	RA Technology, U-Touch, VisioSign

EDUCATION | ZONE FEATURES

The use of technology in the classroom is now widely embraced by schools across Europe and recognised as an effective teaching and learning aid. There is no substitute for good teaching and engaging subject matter but interactive and collaborative tools can go a long way to enhancing the content helping to improve engagement and concentration levels, by making learning more fun for students, whilst giving more freedom to teachers to be creative.

Education budgets are widely under constraint but there are still numerous new builds and refurbishments in the BSF programme as well as Academies and Universities that are investing to attract fee paying students from home and abroad. Recognising that ICT plays a huge part in enhancing the student experience, universities are installing digital signage and video wall solutions in foyers, libraries, classrooms, cafeterias and training areas.

17

INTERACTIVE GAMING | FUTURE SOFTWARE, U-TOUCH

Showcasing interactive gaming, FUTURESoftware uses its DigiSHOW PIPView multiple input viewer to enable two games to be played simultaneously on the 93" interactive video wall. The 2 x 2 NEC 46" X462UN video wall from U-Touch uses true multi-touch to allow multiple users to interact with content at the same time.

18

MULTI-MEDIA TOUCH | SMS, U-TOUCH

The all-in-one touch solution from U-Touch incorporates an iPhone/iPod docking station, web cam and USB ports in the bezel of the 65" display for a comprehensive multi-media solution. The NEC V651 display is mounted on an SMS height adjustable trolley.

19

COLLABORATIVE LEARNING | CBS, DISPLAYNOTE, TEAMMATE

This application from DisplayNote allows users to wirelessly present, share and collaborate across any device or platform, here using iPads and android tablet devices. The monitor support from CBS, Solution Flo, is showcased with iPad mounts enabling users to work ergonomically. Using TeamMate WorksZone, anyone at the table can be the presenter and share any input screen with output to the NEC P462 display.

20

COLLABORATIVE LEARNING | EXTRON, TEAMMATE

The Extron 'Showme' switching system allows users to collaborate at the TeamMate WorksZone station by connecting via VGA cable. Pressing the 'Showme' button directs the content of each user's VGA appliance directly on to the NEC 46" P462 display for all participants to see and share.

21

VIDEO ANNOTATION | DISPLAYLITE, EXTRON, LIFESIZE, TEAMMATE

Extron demonstrates annotation of live video and graphic sources using an NEC 22" AS221 desktop display integrated by DisplayLite with 3M surface capacitive touch screen, mounted on the TeamMate Tutor for lecture applications. Input sources include a video conference camera from LifeSize and a visualiser solution from WolfVision. Content is displayed using an NEC M260XS projector.

22

DIGITAL SIGNAGE | ONELAN, PEERLESS

OneLAN is using two NEC 32" V321 displays mounted on Peerless brackets to demonstrate its Linux based digital signage system.

23**INTERACTIVE LEARNING | DISPLAYLITE, SMART, TEAMMATE**

This mobile interactive display is mounted on the TeamMate VariHite Presenter. The NEC 65" V651 display integrated with the latest NextWindow optical imaging touch by DisplayLite, enable two users to touch the screen simultaneously with any finger, gloved hand or pointer. With SMART Notebook™ collaborative learning software, teachers can create, deliver and manage high-impact interactive lessons.

24**DIGITAL SIGNAGE | PEERLESS, SEDAO**

Sedao demonstrates its 3Zone signage system for Primary Education using NEC V series displays. In addition, Sedao presents its Enterprise Education solution on an integrated OPS slot-in PC, again using V series displays, mounted on Peerless brackets.

25**LECTURE CAPTURE | CRESTRON, PEERLESS, TEAMMATE**

The TeamMate podium is integrated with lecture capture and control technology from Crestron. Demonstrating Crestron's FreeSpeech wireless microphone and CaptureHD, the solution comprises a camera and processor whereby content is recorded and stored online for access via any networked computer. Content is shown on the NEC 55" P552 display mounted on a Peerless bracket.

26**INTERACTIVE 3D | SMS, WSP**

White Space Productions is demonstrating its 3D-Hub solution. Educational 3D content is downloaded from the web portal and projected onto the Vanerum whiteboard using the NEC U250X ultra-short throw projector mounted on an SMS height adjustable mobile trolley. The NEC NP01Wi2 solution creates a fully interactive educational tool.

27**DIGITAL SIGNAGE MEDIAPLAYER | PEERLESS, VISIONPOINT**

VisionPoint has provided the content for NEC to demonstrate its media player on an NEC 40" P402 mounted on a Peerless bracket. An external media player is on show, demonstrating an alternative content delivery method by using USB sticks.

28**INTERACTIVE TOUCH TABLE | SMS**

The NEC 65" touch table utilises the SMS VeriTable, a mobile motorised bracket solution for large screens making presentations more interactive for collaborative working.

29**DIGITAL SIGNAGE | FUTURES SOFTWARE**

FUTURESoftware is showing DigiSHOW EDGE digital signage software running on NEC 46" X461S LED backlit displays with integrated OPS slot-in PCs mounted on NEC slim-line wall brackets. This combination offers a serverless digital signage experience using web browsing to control content.

30**DIGITAL SIGNAGE | RA TECHNOLOGY, U-TOUCH, VISIOSIGN**

VisioSign demonstrates its InfoBoard® web-based digital signage solution, using an NEC 46" P462, dual touch system from U-Touch mounted on an RA Technology Media Mate mobile trolley to display content from the NEC product catalogue.

PROFESSIONAL OFFICE | ZONE FEATURES



PROFESSIONAL Solutions

	Solution	Partner
COLLABORATIVE VIDEO WALL - 2 x 2 LANDSCAPE	31	Dexon, Exterity, Midwich, Peerless
INTEGRATED ROUTING CONTROL	32	Crestron, Peerless
MEETING ROOM OF THE FUTURE	33	AMX, CBS, LifeSize
DIGITAL SIGNAGE - COAXIAL	34	DMP, Peerless
TRADE FLOOR DESKING	35	CBS, DAS, LifeSize, Matrox, Netpractise
INTERACTIVE WHITEBOARD	36	SMS
WORKPLACE COLLABORATION	37	FUTURESoftware, Mentor, NEC Infrontia, TeamMate
IPTV	38	Exterity, Peerless
iPad CONTROLLED VC SIGNAGE SOLUTION	39	Chief, Exterity, LifeSize, Matrox, VisioSign
INTERACTIVE COLLABORATION	40	SMART, TeamMate

PROFESSIONAL OFFICE | ZONE FEATURES

As electronic equipment becomes ever smaller and more powerful, computers used in professional offices shrink in size and increase in performance. The huge tower PC is now a thing of the past, being replaced by much smaller thin client and ultra-small form factor PCs and laptops. However the display screen itself has radically grown in size and resolution.

Hot-desking and video conferencing are now very common within the professional office. The ability to adjust the display and desk to suit an individual's requirements is an important factor in providing a safe and comfortable working environment. Government requirements and corporate aspirations for the reduction of power consumption and carbon footprint has a high impact on IT and AV investments where innovative ECO features are increasingly demanded. Everyone is looking for new ways to increase productivity whilst reducing costs.

31

COLLABORATIVE VIDEO WALL | DEXON, EXTERITY, MIDWICH, PEERLESS

True Colours demonstrates a video wall solution using the Dexon 3800 Series image processor working in conjunction with Exterity IPTV, and IP based CCTV with networkable cameras from Midwich Security. Four NEC 46" X462UN ultra narrow bezel displays are mounted on a Peerless 2 x 2 trolley and an NEC 46" V462 with embedded PC is mounted on a Peerless stand displaying the WOW Vision collaboration tool.

32

INTEGRATED ROUTING CONTROL | CRESTRON, PEERLESS

Crestron's DMPS300 analogue and digital routing solution integrates all AV and IT sources in this boardroom scenario through the TPMC4SM touch panel demonstrating how users can book rooms and remotely manage environmental settings. The NEC 46" V462 is mounted on a Peerless trolley.

33

MEETING ROOM OF THE FUTURE | AMX, CBS, LIFESIZE

Creating the ultimate meeting room of the future incorporating video conferencing solutions from LifeSize using the CBS VCALL AV mounting solution with built-in universal codec and camera mount, supporting the NEC 82" LCD8205 screen. The CBS AVALL AV mounting solution is supporting two NEC 70" P702 screens. Video conferencing is demonstrated using the AMX Enova DVX-3150HD all-in-one controller in a single 3U box. The new NEC L51W LED portable projector is also shown here.

34

DIGITAL SIGNAGE | DMP, PEERLESS

Digital Media Projects (DMP) demonstrates its Media Control Hub, advanced head-end equipment which allows broadcast of digital signage and high definition television across coaxial infrastructure. This solution deploys to NEC's 55" V551 display, mounted on a Peerless trolley.

35

TRADE FLOOR DESKING | CBS, DAS, LIFESIZE, MATROX, NETPRACTISE

DAS shows its Optima o8 desks with a variety of monitor configurations powered by Matrox with monitor support systems from CBS. The 2 x 3 screen set-up using NEC 23" EX231Wp LED Office Cool displays, demonstrates a typical trading room configuration. Two NEC 30" PA301W displays in portrait orientation demonstrate picture-in-picture capability. NEC showcases its EA range of business desktop displays and three landscape NEC 23" EX231Wp displays are showing corporate signage from Netpractise and video conferencing from LifeSize. NEC is also showing its new thin client mount.

36

INTERACTIVE WHITEBOARD | SMS

An SMS VeriTable is used to create a height adjustable interactive table. The NEC U310W ultra-short throw projector projects onto a Vanerum whiteboard with interactive NEC software attachment (NP01Wi2).

37

WORKPLACE COLLABORATION | FUTURES SOFTWARE, MENTOR, NEC INFRONTIA, TEAMMATE

Utilising the TeamMate WorkZone furniture, FUTURES Software is demonstrating the DigiSHOW PIPView work place collaboration solution whereby up to four laptops can connect simultaneously to a single large display, here an NEC 42" V422 dual touch display supplied by Mentor. Above this solution are two V422 displays mounted showing the NEC Infrontia call centre tracking solution.

38

IPTV | EXTERITY, PEERLESS

Exterity demonstrates how its IPTV head-end solution can add value to any display with live TV, browser based management, content delivery from VoD servers and with the creation of in-house channels. This solution uses NEC 46" V462 displays mounted on Peerless trolleys and an NEC 23" PA231W desktop display.

39

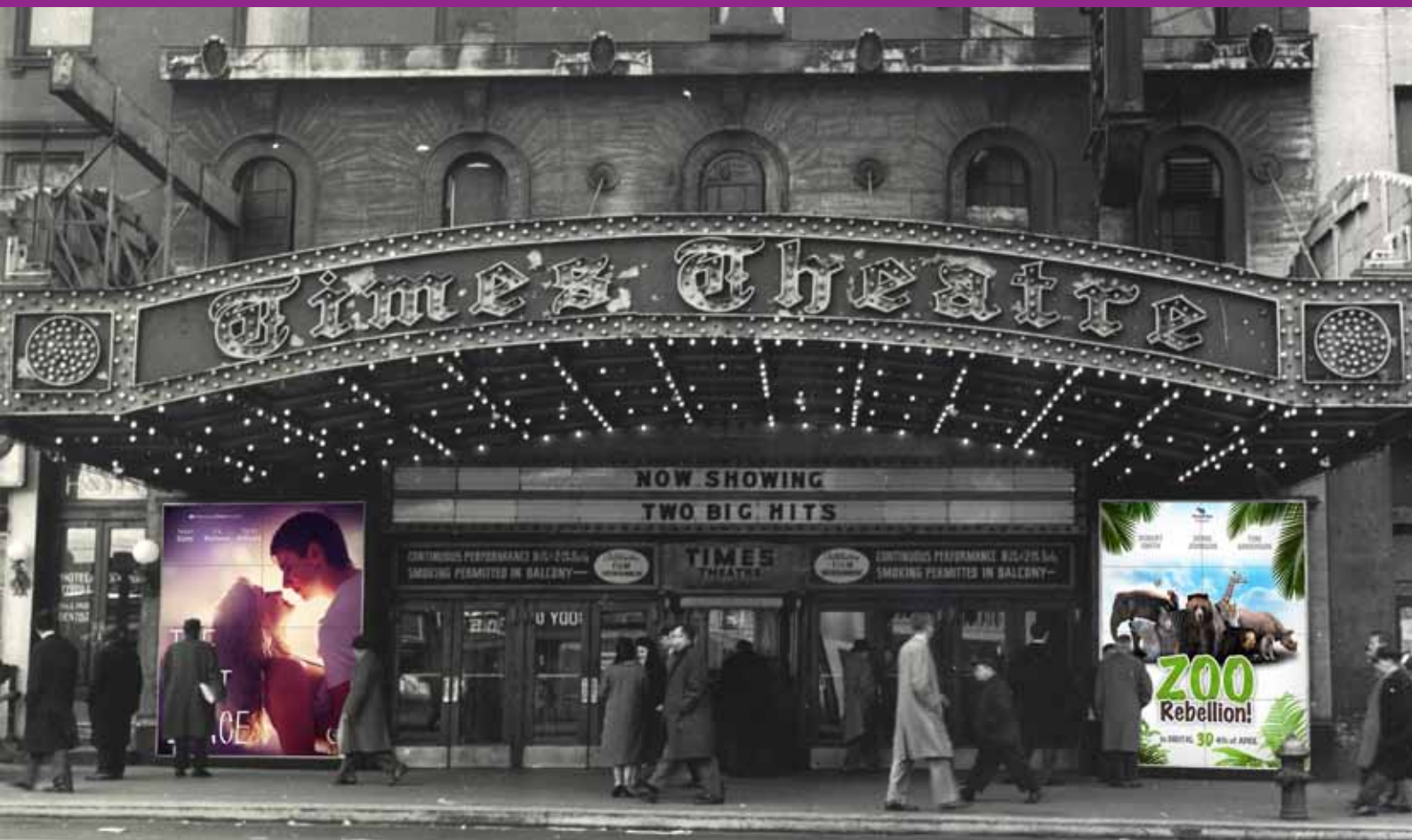
iPad CONTROLLED VC SIGNAGE SOLUTION | CHIEF, EXTERITY, LIFESIZE, MATROX, VISIOSIGN

VisioSign demonstrates its InfoBoard® web-based digital signage solution, displayed on a 2 x 2 NEC 42" X462UN video wall fixed on a Chief LVM floor mount incorporating a camera and codec shelf. A Matrox Mura PC with multiple inputs powers the video wall with IPTV distributed by Exterity and video conferencing input from LifeSize.

40

INTERACTIVE COLLABORATION | SMART, TEAMMATE

The SMART Board™ 8070i interactive display encourages collaboration and enables digital information to be shared between teams. The NEC 70" P701 touch screen is mounted on a TeamMate VariHite Presenter.



3D & LEISURE Solutions

	Solution	Partner
BA FLIGHT SIMULATOR [ENTRANCE]	1	FUTURESoftware
IP STREAMING	41	Chief, ComQi
DIGITAL SIGNAGE - WEB-BASED	42	DMP
GLASSES FREE 3D	43	Chief, Mentor
PASSIVE 3D	44	Extron, NexNix
ACTIVE 3D	45	RA Technology, WSP
GESTURE CONTROL	46	Intel
HORIZON SCREEN	47	Kin Design
VIDEO WALL - 10 x SCREEN	48	Sedao
PHOTO BOOTH	49	Chief, Sedao

3D & LEISURE | ZONE FEATURES

With the already growing popularity of 3D entertainment in cinemas, 2011 was seen as the year that 3D applications started to mature and in 2012 this is set to continue with 3D reaching further into the entertainment, education and corporate environments. The mind set of the 'older' generation is now firmly in line with that of today's youth who have known nothing but the immersive experience seen with the unprecedented success of 3D films like Avatar in 2009.

The latest generation of computers has sufficient power to process and render 3D video in real time, making it more accessible for use within the home. With the public's familiarity with 3D and touch interaction now more common place, the gaming and entertainment sector must innovate to match customer expectations.

1

BA FLIGHT SIMULATOR [ENTRANCE] | FUTURES SOFTWARE

FUTURESoftware presents the BA flight simulator where visitors are welcomed aboard by the flight attendants. This solution is today raising money for HighFlight, offering relief to disadvantaged children. NEC Short throw Projectors and a 55" P551 mounted on a Unicol floor mount displays the view from inside.

41

IP STREAMING | CHIEF, COMQI

ComQi is showing its ScreenGate IP Streamer solution which is taking advantage of the existing network infrastructure to deliver content to multiple sites via LAN or WAN, designed to maximize the quality of the content whilst minimising bandwidth consumption. The content is streamed and displayed on two NEC 40" P402 displays mounted on Chief Fusion™ mounts.

42

DIGITAL SIGNAGE | DMP

Using NEC 55" X551S displays mounted on NEC slim-line brackets, Digital Media Projects (DMP) demonstrates digital signage content for use in clubs and bars, using the DMP Immersion STB and media player. Signage is created, deployed and managed using a web-based Creator and Content Management System (CMS).

43

GLASSES FREE 3D | CHIEF, MENTOR

Mentor Distribution is showcasing its 55" glasses free 3D solution built into the NEC X551S display mounted on a Chief wall bracket, using content provided by 3D Exposure and iPONT. Glasses free 3D players are demonstrated including a live TV player which converts standard 3D content into glasses free content, such as Sky3D, XBOX360, PS3, Blu-ray player.

44

PASSIVE 3D | EXTRON, NEXNIX

Demonstrating a passive 3D solution using two NEC XGA PA600X professional installation projectors, NexNix uses a stereoscopic passive circular polarised 3D rig for directly streaming Sky TV with front and rear projection. The Extron JMP9600 HD server is used for playback of 3D stereo video in up to 2k resolution. This solution can use a Goo silver 3D sprayed screen, an electric roller screen with 3D metallic silver fabric or a fixed fabric 3D screen.

45**ACTIVE 3D | RA TECHNOLOGY, WSP**

White Space Productions demonstrates an active 3D solution using an RA Technology R2-3D Trolley. An NEC U250X ultra-short throw projector is mounted on the mobile height adjustable trolley to project various 3D content.

46**GESTURE CONTROL | INTEL**

Bally's Total Fitness Result Centre is developed by Helios Interactive and Manifest Digital, using SoftKinetic's 3D camera technology to provide gym-goers with nutritional advice and gaming apps using gesture control. The integration of the Intel® AIM Suite enables the system to measure audience behaviour and viewer demographics. The NEC 70" P701 and 32" V321 displays are mounted on Unicol portrait mounts.

47**HORIZON SCREEN | KIN DESIGN**

Kin Design is showcasing its Horizon Screen as used at the National Maritime Museum. Five NEC 55" X551S displays are arranged in a panoramic display communicating the breadth of the museum's archive, 4000 high resolution images form a sea of content that flows towards the viewer. The images are organised by their visual similarity to each other and visitors can roll through the content using a giant trackball.

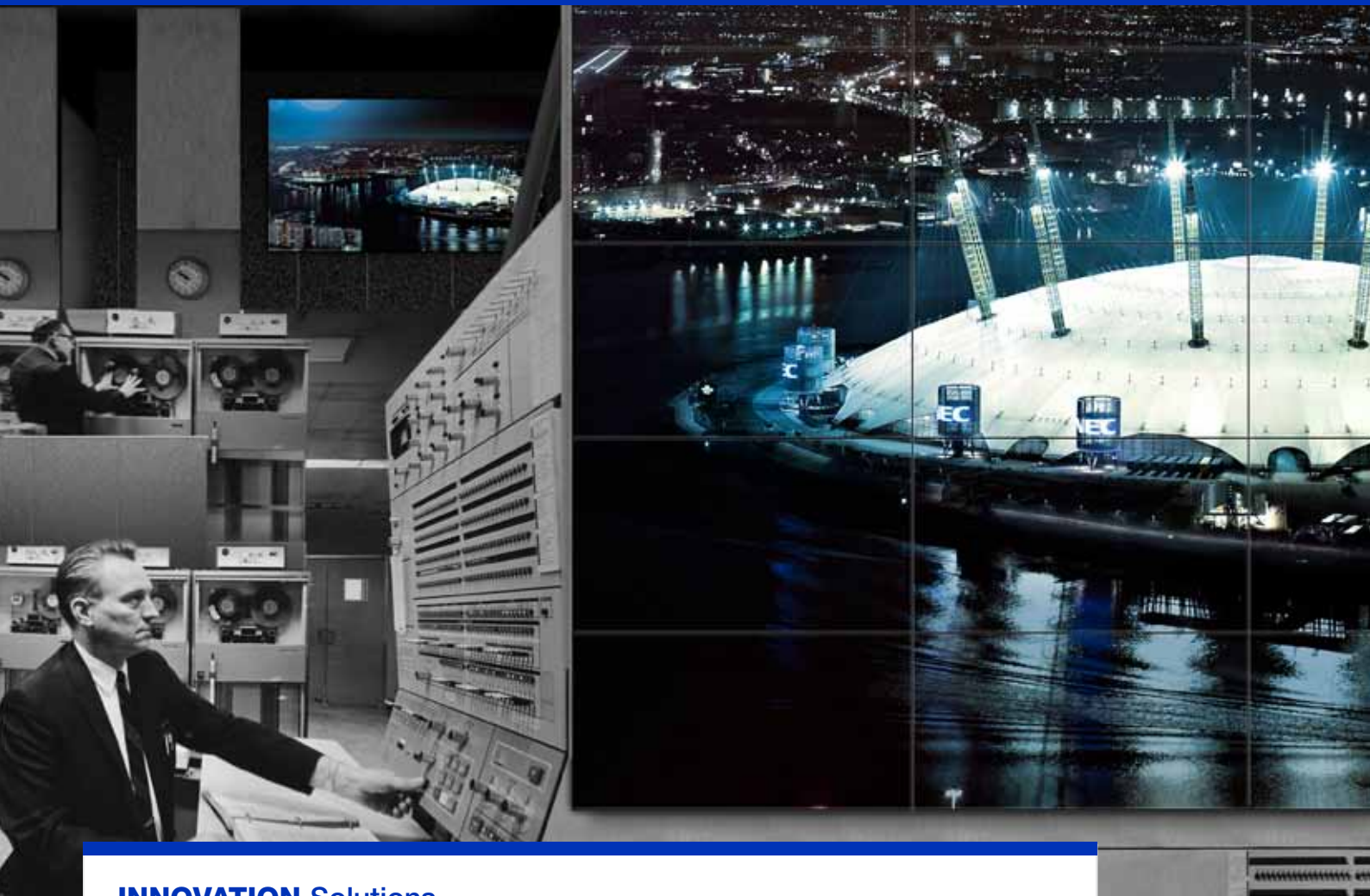
48**VIDEO WALL | SEDAO**

Ten NEC 32" V321 displays create a high impact video wall to demonstrate Sedao's SAM player for wifi peer-to-peer synchronisation.

49**PHOTO BOOTH | CHIEF, SEDAO**

The photo booth solution from Sedao enhances the visitor experience at an attraction or event, using HD cameras, gesture control and touch technology. The NEC 46" P462 display is mounted on a Chief PFCU height adjustable mobile cart.

NEC INNOVATION | ZONE FEATURES



INNOVATION Solutions

	Solution	Partner
MULTI-TOUCH WAY-FINDING	50	DisplayLite
PROJECTOR APPS	51	Chief, Crestron
VIDEO WALL PROCESSOR - 2 x 2 LANDSCAPE	52	Chief, Hiperwall
MULTI-TOUCH	53	DisplayLite, RA Technology
ECCENTRIC VIDEO WALL - 6 x SCREEN	54	Extron
TRANSPARENT DISPLAYS	55	NEC
BROCHURE KNOWLEDGE BANK	56	DisplayLite
MONITORING AND CONTROL	57	Intel

NEC INNOVATION | ZONE FEATURES

IMS Research's World Market for Digital Signage 2011 reports that the industry was worth \$6.8 Billion in 2010, with sustained growth expected well beyond 2015.

With the digital revolution, signage is becoming more dynamic as it is displayed on large format screens, projection systems, small desktop displays, LED displays, 3D displays and other screens used to inform, direct and attract for a variety of purposes. The increased interest and growth in digital signage can be attributed to the recognition by owners that it offers a higher level of audience engagement and is establishing a proven ROI. The industry is recognising that higher levels of engagement can be achieved through interaction with audiences leading to innovative advances in display technology.

50

MULTI-TOUCH WAY-FINDING | DISPLAYLITE

Combining an NEC 32" V321 display, on a Unicol bracket, with integrated DisplayLite multi-touch and way-finding software from Touchez, visitors can use this solution to navigate their way around the NEC Showcase.

51

PROJECTOR APPS | CHIEF, CRESTRON

NEC is demonstrating its projector apps using a P420X projector and two NEC 24" AS241 desktop displays mounted on a Chief Kontour™ dual head monitor arm. Projector apps include ImageExpress, Crestron RoomView and PC control software.

52

VIDEO WALL PROCESSOR | CHIEF, HIPERWALL

NEC, powered by Hiperwall, demonstrates the flexibility of its distributed visualisation system. Live video input comes from various sources including CCTV and webcam, with output to four NEC 55" X551UN displays mounted on an Easyframe and three NEC 23" EA232WMI desktop displays mounted on a Chief KTP325 table stand. Using the Hiperwall system, output can also be made through a projector, here an NEC PX750U.

53

MULTI-TOUCH | DISPLAYLITE, RA TECHNOLOGY

Utilising an NEC 55" P551 display integrated with a 32" touch point screen, mounted on a RA Technology iTouch trolley, DisplayLite demonstrates multi-touch technology, here using an example of a flood defence and management application.

54

ECCENTRIC VIDEO WALL | EXTRON

Extron has created an eccentric video wall with view porting, cropping and resizing of real time images. A number of NEC displays including 23" 32", 46" and 55" displays from the V and P series have been mounted to form a creative video wall solution.

55

TRANSPARENT DISPLAYS | NEC

NEC showcases its new prototype 40" and 22" transparent displays.

56

BROCHURE KNOWLEDGE BANK | DISPLAYLITE

Using an NEC 32" V321 display, on a Unicol stand, with NextWindow optical imaging technology integrated by DisplayLite, users can search for information and download it to a USB stick. Here DisplayLite have used content based on NEC product datasheets.

57

MONITORING AND CONTROL | INTEL

NEC demonstrates its network control and management software including NaviSet. Intel AMT software enables monitoring and control of the PC. The NEC 46" X461S mounted on a Unicol floor trolley has an OPS embedded PC.



TRANSPORT Solutions

	Solution	Partner
FLIGHT INFORMATION DISPLAY	58	Scala
AIRPORT DIGITAL SIGNAGE	59	Harp, Scala
FACIAL RECOGNITION	60	CBS, NEC IT Solutions
CHECK-IN SECURITY	61	Peerless,
CROWD MANAGEMENT	62	CBS, NEC IT Solutions
MOBILE FLIGHT INFORMATION - 3 x 3 LANDSCAPE	63	Matrox, Peerless
CUSTOMER FLOW MANAGEMENT	64	Netpractise, Peerless
INTEGRATED DIGITAL SIGNAGE TOTEM	65	Harp
BAGGAGE CONTROL	66	Esprit Digital

TRANSPORT | ZONE FEATURES

With ever increasing demand for travel, whether by plane, train or bus, operators are primarily investing in new technology to meet increases in customer service needed in order to remain competitive. Meanwhile, operators are also looking for new non-operational revenue streams which will help balance the deficit being created by lower operating margins - the result of increasing competition.

Operators are having to rethink the way they communicate with passengers at each stage of their journey, from booking through to departure, as the use of mobile devices, such as smartphones, bring new opportunities and challenges.

58

FLIGHT INFORMATION DISPLAY | SCALA

Displayed on three NEC 46" P462 displays, Scala is demonstrating a flight information solution (FIDS) mounted in portrait orientation.

59

AIRPORT DIGITAL SIGNAGE | HARP, SCALA

Scala showcases its airport information application, combined with the Scala Ad Management platform. Scala content is displayed on the Harp totem solution using an NEC 55" X551S with LED backlight technology in a portrait configuration within a robust IP65 enclosure.

60

FACIAL RECOGNITION | CBS, NEC IT SOLUTIONS

NEC demonstrates its NeoFace biometrics solution using facial recognition software for security operations. Using NEC 20" E201W displays on CBS mounting columns in a check-in desk scenario, NeoFace Watch is used for surveillance and identification purposes.

61

CHECK-IN SECURITY | PEERLESS

Creating an airport check-in scenario, three NEC 46" X461S LED backlit displays are mounted on Peerless brackets. Each display has an NEC OPS module slotted inside, running C-Nario signage software.

62

CROWD MANAGEMENT | CBS, NEC IT SOLUTIONS

NEC NeoFace facial recognition software is used to monitor the movement and volume of people in public areas. An NEC 40" P402 is mounted on a CBS stand to demonstrate NEC crowd management technology.

63

MOBILE FLIGHT INFORMATION | MATROX, PEERLESS

This mobile airport digital display uses nine NEC 46" X462UN ultra narrow bezel displays, powered by Matrox, creating a video wall mounted on a Peerless 3 x 3 mobile trolley.

64**CUSTOMER FLOW MANAGEMENT | NETPRACTISE, PEERLESS**

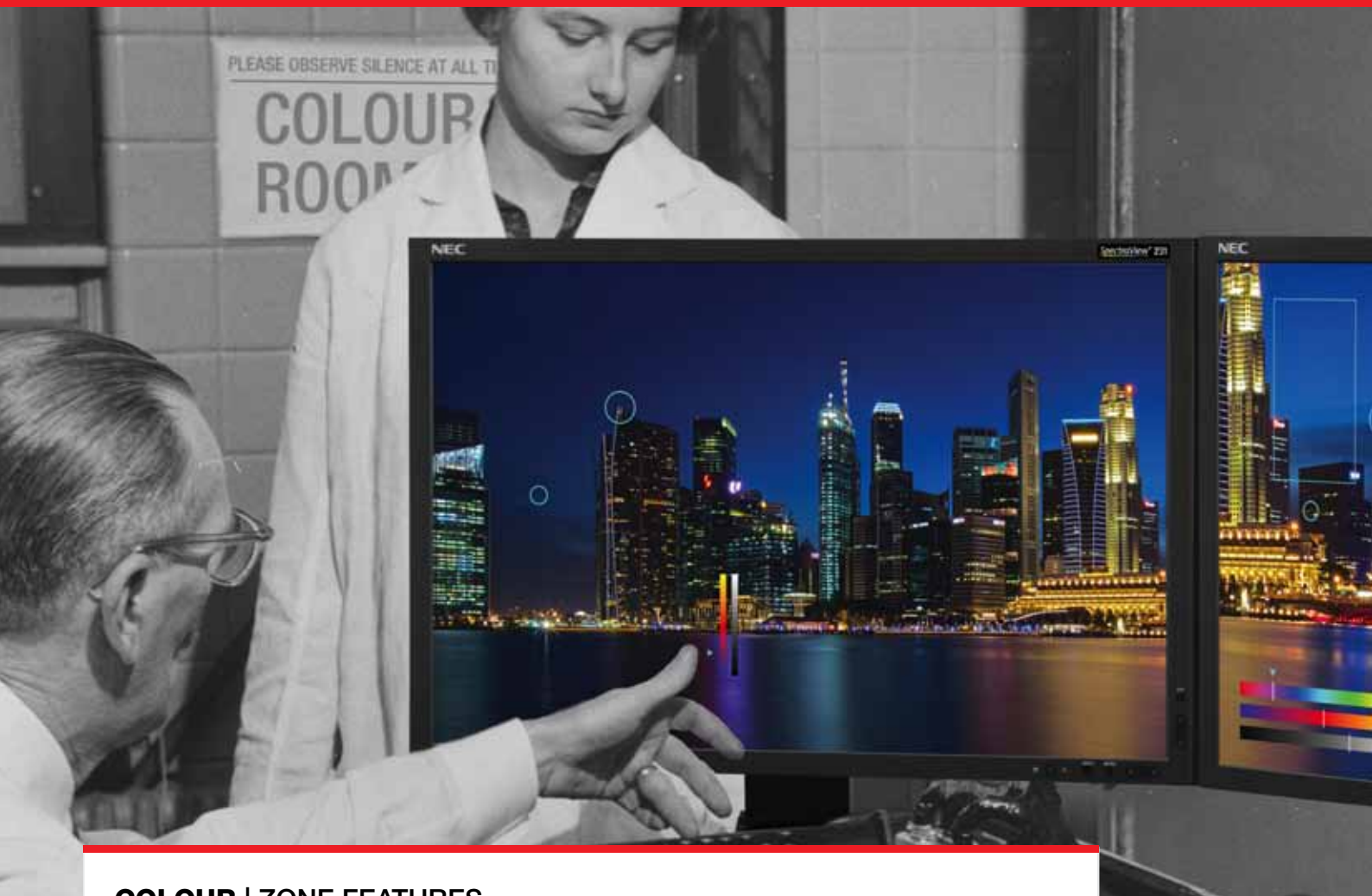
Netpractise demonstrates Customer Flow Management (CFM) with an example of a rail network solution using the Operational Information System (OIS). NEC large format V Series and NEC 22" E222W displays are mounted on Peerless wall brackets.

65**INTEGRATED DIGITAL SIGNAGE TOTEM | HARP**

Harp demonstrates its integrated digital signage display in a standalone totem configuration using an NEC 55" X551S with LED backlight technology in a portrait configuration within a robust IP65 enclosure. The Harp interactive solution is displaying a passenger information application.

66**BAGGAGE CONTROL | ESPRIT DIGITAL**

Esprit Digital creates an airport baggage belt scenario with its Digital Baggage Pods. The double-sided format combines four NEC 46" P462 displays (32:9) with backlit light boxes in a single stainless steel enclosure.



COLOUR | ZONE FEATURES

Accurate colour reproduction is vital for success within the print and design industry. Traditional hard proofing techniques, whilst a tried and trusted method of ensuring precise results, are inefficient and costly. In today's digital world the computer screen has to become the digital equivalent of the transparency and light box combined and through accurate colour management the results are trusted by those involved in the selection and approval process.

In an effort to reduce film costs and to save printing time, printing and design companies are moving away from the traditional hard proofing processes, relying instead on digital proofs for client approval. Due to this workflow transition, it is necessary for the display system to be capable of reproducing precise colour at any time.

COLOUR Solutions

COLOUR WORKFLOW

Solution

67

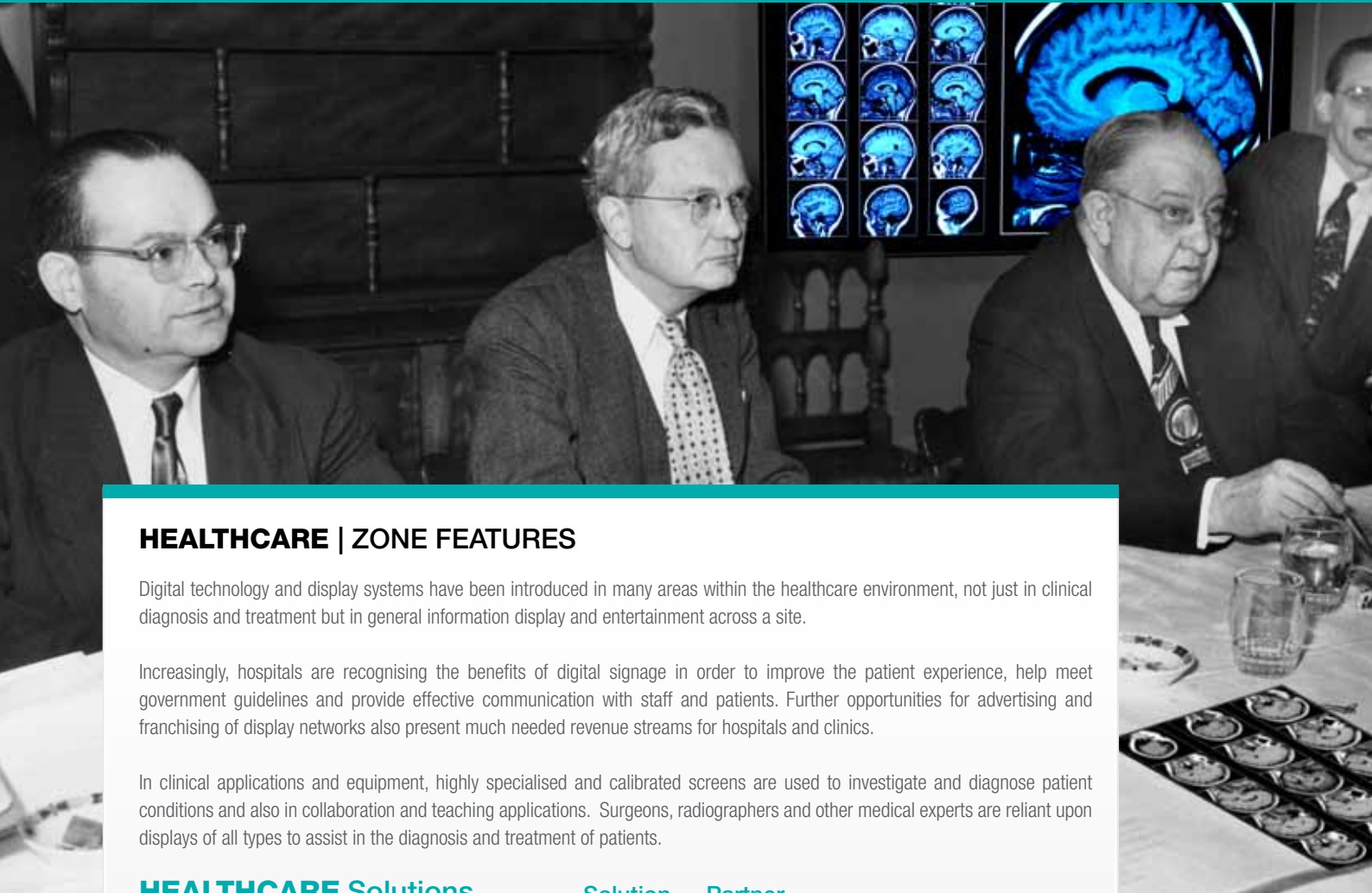
Partner

Colour Confidence

67

COLOUR WORKFLOW | COLOUR CONFIDENCE

Colour Confidence presents a full colour work-flow demonstration using NEC SpectraViewReference displays, a 55" P552 professional display, a light box, printer and live model.



HEALTHCARE | ZONE FEATURES

Digital technology and display systems have been introduced in many areas within the healthcare environment, not just in clinical diagnosis and treatment but in general information display and entertainment across a site.

Increasingly, hospitals are recognising the benefits of digital signage in order to improve the patient experience, help meet government guidelines and provide effective communication with staff and patients. Further opportunities for advertising and franchising of display networks also present much needed revenue streams for hospitals and clinics.

In clinical applications and equipment, highly specialised and calibrated screens are used to investigate and diagnose patient conditions and also in collaboration and teaching applications. Surgeons, radiographers and other medical experts are reliant upon displays of all types to assist in the diagnosis and treatment of patients.

HEALTHCARE Solutions

	Solution	Partner
DIAGNOSTIC & REVIEW DISPLAYS	68	NEC
BED MANAGEMENT	69	Cayder
DOCTOR/PATIENT CALL	70	Sedao

68

DIAGNOSTIC & REVIEW DISPLAYS | NEC

NEC demonstrates its medical diagnostic (MD) and medical review displays including large format with DICOM preset.

69

BED MANAGEMENT | CAYDER

Cayder demonstrates its bed management system for hospitals using a touch enabled NEC 46" P461 DST mounted on a Unicol bracket.

70

DOCTOR/PATIENT CALL | SEDAO

Sedao presents its new plug-in solution which sits on top of existing patient management systems and surgery networks for primary care Dr/Patient call information. The demonstration utilises an NEC 42" V422 display mounted on a Unicol wall bracket.



RETAIL Solutions

	Solution	Partner
INTERACTIVE VIDEO WALL - 3 x 2 LANDSCAPE	71	U-Touch
GESTURE CONTROL AND AR	72	MediaStation, VisionPoint
QSR (QUICK SERVICE RESTAURANT) SIGNAGE	73	DMP
3D VIRTUAL DRESSING ROOM	74	FaceCake, Intel
DELAY MIRROR	75	ComQi
WINDOW INTERACTIVE TOUCH	76	VisionPoint
INTERACTIVE SIGNAGE WITH SHAZAM	77	Chief, ComQi
INTELLIGENT SIGNAGE	78	Instoremedia
MULTI-TOUCH VIDEO WALL - 1 x 3 LANDSCAPE	79	DisplayLite

RETAIL | ZONE FEATURES

Digital displays are now commonplace in retail stores, shopping malls and high streets. Advertising using video rather than static posters is highly beneficial to brands and can lead to cost savings through electronic, rather than physical delivery of content.

The enormous benefits gained through attracting, directing and focusing the revenue-generating potential of consumers, means that retailers are constantly looking for new, eye-catching solutions and effects, with ever more sophisticated users demanding more interaction from displays. Natural competition between retailers is helping display manufacturers get involved in more elaborate and larger scale projects in order to get their screens noticed. As the sector increases, so does the skill set of the suppliers, content providers and signage companies.

71

INTERACTIVE VIDEO WALL | U-TOUCH

U-Touch showcases its 153" interactive video wall using NEC 55" X551UN displays in a 3x2 configuration on a Unicol floor mount trolley. The touch overlay uses toughened glass with an anti-reflective coating. U-Touch demonstrates how more than one PC can be plugged into the video wall, each utilised in turn using a switch without needing to recalibrate the touchscreen.

72

GESTURE CONTROL AND AR | MEDIASTATION, VISIONPOINT

VisionPoint uses four NEC 46" X461S with integrated OPS compatible PCs to demonstrate interactive digital signage using gesture control and augmented reality with cameras from MediaStation.

73

QSR (QUICK SERVICE RESTAURANT) SIGNAGE | DMP

Digital Media Projects (DMP) uses its advanced web-based digital signage Creator and Content Management System (CMS) to create and manage content for QSR using two NEC 23" EX231Wp in portrait orientation and a NEC 46" X461S.

74

3D VIRTUAL DRESSING ROOM | FACECAKE, INTEL

FaceCake presents Swivel, a 3D, full-motion, real-time virtual dressing room that enables shoppers to 'try on' clothing. Using an NEC 55" V551 display mounted on a Unicol wall mount, Swivel utilises augmented reality technology to create a virtual shopping experience. The solution is driven by an Intel CPU with input from MicroSoft Kinect cameras.

75

DELAY MIRROR | COMQI

ComQi presents its delayMirror which delivers a live video of a the person standing in front of it with a delay of 3 seconds, which is perfect for trying on clothes! DelayMirror is integrated and powered by the EnGage Platform and is connected to the EnGage media player.

76

WINDOW INTERACTIVE TOUCH | VISIONPOINT

VisionPoint is showing a 'live' interactive touch through glass demonstration of its Touch247™ software displaying used vehicles. Incorporating SMS and QR functionality plus the latest 'Digi-Brochure' technology, this solution displays real time stock information and enables customers to download directly to their Smartphone. Utilising NEC's new high bright 46" display X462HB and a capacitive touch foil, this solution can be placed in the challenging outdoor window environment.

77

INTERACTIVE SIGNAGE WITH SHAZAM | CHIEF, COMQI

ComQi partners with Shazam to provide interaction between the audio sound coming out of the digital signage display, here an NEC 42" V422 mounted on Chief wall brackets, and a mobile phone. ComQi's Interaction Manager enables consumers to have access to coupons, offers, videos and social experiences on their mobile phones by 'Shazamming' the screen.

78

INTELLIGENT SIGNAGE | INSTOREMEDIA

InstoreMedia presents an intelligent signage solution in collaboration with NEC Lab's Leafengine. The signage is integrated with external hardware sensors such as pressure pads, a barcode scanner, a camera using Field Analyst to detect audience demographics and shelf detection technology to intelligently alter the content. An NEC 55" X551S with touch capability is mounted in portrait orientation with three NEC 46" X461S displays. This solution also utilises 20 and 23" ultra-narrow bezel desktop displays from the NEC Office Cool range.

79

MULTI-TOUCH VIDEO WALL | DISPLAYLITE

Mounted on an Oramatek video wall system, DisplayLite is showcasing a 123" true multi-touch, multi-user, interactive video wall with three NEC 46" X462UN displays. Using interactive software developed by Touchez and PQ Labs LED Cell technology, users can experience an innovative multi-touch application in retail fashion.

PARTNERS LIST

Partner	Solutions
AMX	7, 33
Cayder	69
CBS	19, 33, 35, 60, 62
Chief	4, 7, 13, 39, 41, 43, 49, 51, 52, 77
Colour Confidence	67
ComQi	41, 75, 77
Crestron	25, 32, 51
DAS	35
Dexon	31
DisplayLite	21, 23, 50, 53, 56, 79
DisplayNote	19
DMP	34, 42, 73
Esprit Digital	66
Exterity	22, 24, 29, 31, 38, 39
Extron	20, 21, 44, 54
FaceCake	74
FUTURESoftware	1, 17, 29, 37
Harp	16, 59, 65
Hiperwall	52
Instoremedia	78
Intel	5, 46, 57, 74
Kin Design	47
LifeSize	21, 33, 35, 39
Matrox	10, 35, 39, 63
MediaStation	72
Mentor	3, 4, 37, 43
Midwich Security	31
NEC Display Solutions	ALL
NEC Infrontia	37
NEC IT Solutions	60, 62
Netpractise	35, 64
NexNix	6, 44
OneLAN	8, 22
Peerless	22, 24, 25, 27, 31, 32, 34, 38, 61, 63, 64
PSCo	10
RA Technology	30, 45, 53
Scala	9, 58, 59
Sedao	24, 48, 49, 70
SMART	23, 40
SMS	18, 26, 28, 36
TeamMate	19, 20, 21, 23, 25, 37, 40
Touch2view	3
U-Touch	17, 18, 30, 71
UNICOL	1, 5, 50, 56, 57, 58, 67, 68, 69, 70, 71
VisionPoint	27, 72, 76
VisioSign	30, 39
Wonderworks	2
WSP	11, 26, 45

AMX



AMX is demonstrating how the perfect automated meeting room can be realised by harnessing key products from its innovative range including the ground-breaking Enova DVX-3150HD; an all-in-one controller, AV switcher, scaler, analogue to digital signal converter, twisted pair transmitter and amplifier with built-in professional grade audio processing. The Enova DVX-3150HD seamlessly handles both analogue and digital AV and makes HDCP as easy to install as analogue and all in a single 3U box.

From a fully interactive meeting room, visitors can also discover why the DVX offers a cost effective way of consolidating VC equipment, allowing any room with a camera and a display to offer a video conferencing facility. The Modero X touch-panel allows meeting room users to interact with the technology around them in a whole new way. A 'control surface' allows them to perform multiple activities, at the same time. Dedicate one area on the control panel for video-conferencing and a second to device control, all while having full access to room settings and more.

Chief

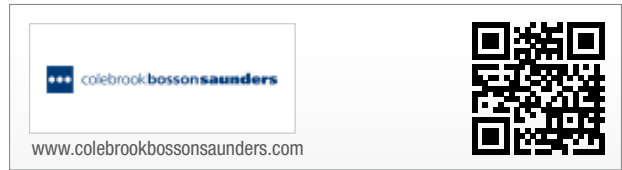


Chief is demonstrating various new video wall and multi-monitor solutions. Chief's new FUSION® Series freestanding solution makes it possible to construct video walls in prominent locations for temporary situations, or when wall-mounted installation is not an option. Available in three configurations, these freestanding walls can be combined with accessories to achieve video walls up to three displays high and any width. This mobile video wall series accommodates 40-65" displays and offers easy adjustment setting on axis to perfectly align the displays.

Also on display is Chief's next generation of monitor desk top mounts called Kontour. The Kontour series mounts create flexible, functional workspaces in a wide variety of settings. The ergonomic designs are easy to adjust for proper alignment, whilst maintaining a cutting edge sleek look. Dynamic height adjustment using gas spring technology, integrated cable management and quick release systems are just a few of the series' key features.

Chief's multi monitor desktop series provides a rock solid, free-standing solution for graphic designers, broadcasters, security and control room environments and other users who work with multiple flat panel monitors up to 30". This series features independent adjustment of each screen for proper ergonomic alignment as well as integrated cable management and is available from 2x1 up to 3x9 monitor configurations.

Colebrook Bosson Saunders

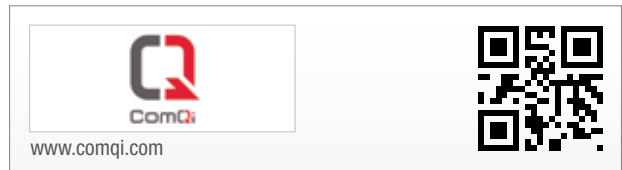


Colebrook Bosson Saunders (CBS) designs and manufactures ergonomic screen mounting solutions that integrate people, technology, and furniture within the workplace. CBS' product range includes desktop monitor supports, medical infotainment supports, CPU cradles, laptop supports, cable management, mobile workstations and an ever increasing range of AV/VC mounting solutions.

With a high profile project list including Nomura; London Heathrow Terminal 5, BMW, Glaxo Smithkline, Bank of America, KPMG, Oxford University, Unilever and Texaco, CBS delivers ergonomic mounting solutions in a range of environments including offices, trading floors, healthcare, education, passenger terminals and retail.

CBS is showcasing the award winning Wishbone and Wishbone Plus systems as part of the DAS Business Furniture application, plus the Flo Monitor Arm and AVALL/VCALL AV/VC solutions.

ComQi



ComQi provides powerful multi-channel message management platforms that control a network's content and infrastructure, closing the loop between digital signage, mobile, web and social media within a venue. This provides powerful 'Connected Experiences' for the end user.

ComQi enables these Connected Experiences through a single platform that offers media distribution, network and content management, interactive experiences and impact measurement. This platform encompasses solutions in digital signage, music, touch screen, mobile experiences, streaming technologies, distribution technologies, video walls and media players as well as retail innovations such as the delayMirror being demonstrated at the Showcase. ComQi is also demonstrating interaction between digital signage and a mobile phone through its partnership with Shazam who offer downloadable music.

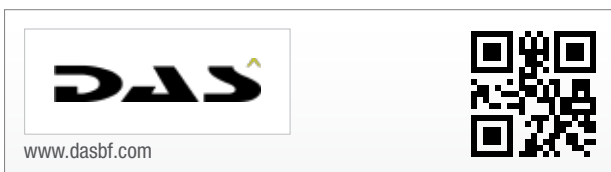
Crestron



Crestron offers building and AV/IT controls for the corporate, educational and residential markets. At the NEC Showcase, Crestron is offering demonstrations of their products that unify AV/IT and building technologies on to a single operating system which are then operated through a single, intuitive interface.

From boardroom tele-presence systems to classroom multimedia lectures, environmental controls to room scheduling, Crestron is shaping the future of corporate and educational facilities. With remote access to heating, lighting, blinds and security, Crestron systems is now presenting significant reductions to carbon emissions for both fiscal and environmental savings.

DAS Business Furniture



DAS is a specialist in the design, manufacture and installation of desking for trading and control rooms. Supporting the NEC Showcase, DAS is presenting desks from the Optima range, incorporating the current British Ergonomic Standard. DAS desks have been developed as a straightforward, low maintenance, highly flexible and cost effective answer to providing high technology desking.

The Optima Range has evolved to meet the changing demands of the market. The key principles include high technology housing of PCs, desk top adjustment and heat management.

Dexon Systems



Dexon Systems develops and manufactures advanced video wall controllers for multi-screen video display projects. Working in close cooperation with system integrator and end-user partners worldwide, Dexon Systems have thousands of working multi-image display walls and control rooms all over the world today.

On show at the NEC Showcase is the Dexon 3800 series image processor. Working in conjunction with Exterity IPTV and IP based CCTV, Dexon creates a high impact video wall solution for corporate, retail, education

and command and control environments. All Dexon image processors are custom built to match requirements with upgrade paths being as simple as plugging in an additional card or loading a new firmware on to a chip. Coming soon will see the introduction of input and output connections on direct dedicated Cat5 cards streamlining the video wall solution.

DMP



Digital Media Projects (DMP) provides bespoke digital signage, HD over coax and IPTV solutions to a range of industries including retail, hospitality, education, sports stadia and corporate. In addition to an advanced digital signage system, DMP has developed a wide range of television and live video deployment technology, including a next-generation IPTV gateway, an advanced HD over coax solution and a range of HD encoders. These are more commonly known as DMP's 'orange boxes'.

In the Professional Office zone, DMP demonstrates its Media Control Hub, advanced head-end equipment which allows broadcast of digital signage and high definition television across coaxial infrastructure. DMP demonstrates the power of compelling digital signage in clubs and bars, using their own DMP Immersion STB and media player located in the 3D and Leisure zone.

DMP's advanced web-based digital signage Creator and Content Management System allows you to create dynamic and impactful content, which can be easily deployed and managed from anywhere with an Internet connection. Signage creation demonstrations are taking place in the Retail zone using an NEC 46" display and two portrait 23" LED displays.

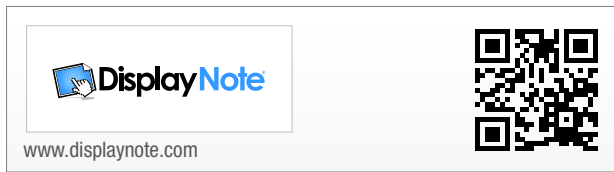
DisplayLite



DisplayLite is a leading touch screen supplier specialising in the integration of interactive touch screen technologies into NEC desktop and large format displays. DisplayLite is showing their custom made 123" true multi-touch, multi-user, 1x3 interactive video wall using NEC's X462UN displays.

Integrated into NEC's Value and Professional series large format displays, visitors can see how DisplayLite's interactive multi-touch technology is driving applications in way-finding, education, point of information and predictive modelling. DisplayLite technical and sales teams are available to give expert advice on the implementation of different touch technologies.

DisplayNote Technologies



DisplayNote Technologies is showcasing its application that lets users present, share and collaborate on ideas on any device and on any platform. Using DisplayNote, connected devices (iPad, android tablet, Smartphone) can share their screen, annotations and notes with a presenter or with any other connected device.

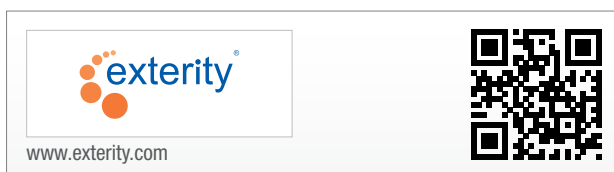
Presenters can use DisplayNote to push documents, images, presentations and videos to any connected device which can annotate, add notes, highlight, save and store for future review. In Presenter mode, DisplayNote lets users control their computer, make any device a presenter device and view anyone's screen. It can be used alongside existing resources, third party software and over a web browser and is available for Windows, Mac and Linux.

Esprit Digital



Esprit Digital is a world leader in LCD screen integration for public environments. At the Showcase Esprit can be found in the Transportation zone demonstrating its new Digital Baggage Pods which were recently installed on all 34 carousels at Gatwick, Manchester and Stansted Airports. Built in Esprit Digital's new factory in Stevenage, the new double-sided format combines two NEC 46" resulting in a 32:9 display with backlit light boxes in a single stainless steel enclosure. Esprit's in-house team of metalwork designers, assembly technicians and software writers consistently deliver innovative, stylish and robust media displays that stand out from the crowd.

Exterity



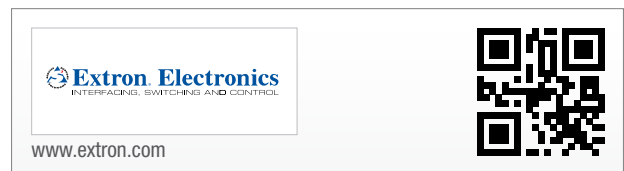
Exterity, providers of IPTV solutions, allow end-users to harness the full potential of AV over IP distribution, delivering high quality television and video across their existing IP network to any screen. At the NEC Showcase, Exterity is demonstrating AvedaServer 4 – an application based server, through which administrators control content, add or remove displays, control video and live TV delivery for a bespoke user experience. IPTV creates a system which is cost-efficient, scalable and can be controlled

and managed with ease. It is also possible to record and play back live TV and even select which programmes are shown - in effect creating your own TV channel.

Also demonstrated is Exterity's ability to integrate with 3rd party technologies, allowing users to integrate IPTV into their daily business communications and deliver customised material anywhere across a global enterprise IP infrastructure. The NEC Showcase sees content from the IPTV Head-end streamed to partners in the Education and Professional Office zones.

All Exterity solutions are modular and support PoE for fast and easy installations. Products are 'hot swap' enabled to simplify maintenance and scaling, allowing the system to grow as your business does.

Extron



Extron Electronics, is a leading manufacturer of professional AV system integration products including AV control systems, computer-video interfaces, switchers, matrix switchers, distribution amplifiers, audio amplifiers, speakers, twisted pair and fiber optic equipment, video scalars, AV signal processors, AV streaming products, classroom sound field systems, and high resolution cable.

In the Education zone, Extron is showcasing streaming with their H.264 encoder and annotation of live video and graphic sources. Annotation will be operated on a 22" touch panel from Displaylite and video sources will include a video conference camera from Lifesize.

Extron is providing JMP9600 HD server for playback of 3D stereo video in up to 2k resolution. The JMP9600 uses JPEG 2K file format, the same as used in Digital Cinemas today. Nexnix will complete the solution for passive 3D with custom projector stacking mounts and polarising filters. Also on show is a creative and eccentric video wall with view porting, cropping and resizing of real time images. This will be demonstrated on an array of NEC displays ranging in size from 23" to 55".

FaceCake Marketing Technologies, Inc.



Available for trial in the Retail zone, Swivel is the first 3D, full-motion, real-time virtual dressing room that enables shoppers to 'try on' and see themselves in multiple apparel and accessories either in store or at home. Retailers can deploy FaceCake's patented real-time image processing and personalisation technology for a unique shopping experience by

providing a realistic dressing room experience with accurate rotation, scaling and sizing that lets customers see how they actually look from different angles. Swivel's social shopping features and interactive style advice make it faster, more fun, and more effective than a simple mirror.

FUTURESoftware



An innovator within the digital signage markets, FUTURESoftware products are designed for the emerging digital out of home, digital signage, dynamic signage, digital messaging, broadcast, satellite and audio visual markets. Their technology focuses primarily on audio visual and internet technologies, working closely with display and control devices such as touch screen, plasma, LCD, LED, projectors, switchers and associated equipment to develop innovative focused solutions.

At the NEC Showcase, FUTURESoftware is showing the DigiSHOW PIPView multiple input viewer where visitors are challenged to play two games at the same time on one large screen. In the Education zone the company is showing their premium digital signage software DigiSHOW EDGE running on NEC screens with OPS embedded computers. This combination offers a serverless digital signage experience using web browsing to control content seen on screen with an unparalleled ease of installation offered by a screen with internal computer combination. Uniquely the system is able to play MS PowerPoint without conversion and in a variety of layouts other than just full screen whilst mixing other media on screen at the same time.

Collaboration in the work place is key to a productive company and in the Professional Office zone, FUTURESoftware is showing DigiSHOW PIPView, allowing the user to connect up to four laptops on to a single large screen simultaneously saving time in meetings.

Harp Visual Communications



Harp's integrated digital signage displays are on show in standalone totem configuration within a number of zones demonstrating the adaptability of the same solution to work in simple passenger information applications through to way-finding applications to augmented reality solutions for digital signage.

The package includes NEC X551S with brightness of 700 cd/m²; 1024 point touch interface which is sandwiched into laminated glass; gesture control using Kinect and D Imager products; near field communication for tag and phone connectivity; face recognition for gender/ age / facial

expression recording or active interrupt and IP65 for external use. All these features have been designed in one sleek design that is robust enough for the urban arena.

Hiperwall



Video walls and distributed visualisation systems have been around for decades, but they have always been too complex and too expensive for most organizations. NEC and Hiperwall have teamed up to eliminate these barriers - by combining NEC hardware with Hiperwall software it is now easy and affordable to build a system that enables you to display content when and where it is needed with great simplicity. The result is a video wall and distributed visualisation system that is ideally suited for many applications including command and control, digital signage, education and entertainment. See the system in action, learn more, and try it for yourself in the NEC Innovation zone.

Instoremedia



Used to power interactive and HD digital displays, the Instoremedia platform can be customized allowing customers to install and manage digital display networks of all scales, from single units to PoS networks spanning an estate.

Information on a network or display can be controlled through the intuitive Instoremedia CMS, a web portal, or by integration with end user systems such as EPOS and a range of display types from touch screens to HD screens can be powered.

The Instoremedia system will also display a wide variety of content types, including Adobe Flash, Microsoft Silverlight, MPEGs, JPEGs, MOV or WMVs. This enables end users to engage their audience directly and realise the benefits of animated display, interaction, increased operational flexibility and increased marketing compliance. Instoremedia's major customers include The Carphone warehouse, Telenor, Telia Sonera, Burger King, Yamaha Motors and Canon.

Instoremedia and NEC Research Labs showcase the latest results of their on-going collaboration. Combining NEC's Leaf Engine and Field Analyst technologies with the Instoremedia platform, the solution allows you to target customers with specific media content based on their gender and their age to analyse the demographics of your audience.

Intel®



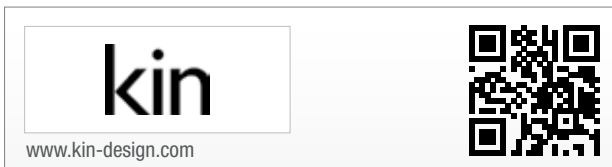
Intel® processors and chipsets meet the demand for power-efficient performance, Internet connectivity and security requirements for embedded devices. Digital signage with Intel® vPro™ technology inside delivers rich multimedia content, enables remote management (Intel® AMT), advanced security, energy savings, and a lower TCO whilst maximizing ROI.

The Open Pluggable Specification (OPS) developed by Intel and NEC helps to standardise the design and development of digital signage devices and pluggable media players. The OPS enables easier installation, seamless upgrades and easier maintenance of digital signs. It also makes digital signage devices more intelligent and connected.

Today's dynamic digital signage systems display rich multimedia messages anywhere while measuring marketing effectiveness using Intel® AIM Suite (Anonymous Viewer Analytics) software. Intel® Core™ processors running AVA enables digital signs to measure marketing ROI by capturing audience data and deploy targeted ads based on demographics (age and gender). AVA can track how many viewers and how long they viewed, gauge audience interest and correlate advertising to purchases. Intel will demonstrate the capabilities of the Intel® AIM Suite in the Crystal CS demo where it runs concurrently with Crystal CG software. The demo will detect a face and play an animation depending on the age group the AIM has judged the person to be. In the end visitors can download their photo on to their smartphone by using the displayed QR code.

At the Showcase, Intel is demonstrating the above technologies plus the innovative new Bally's Total Fitness Result Centre. Developed by Helios Interactive and Manifest Digital, using SoftKinetic's 3D camera technology, Bally's Total Fitness Result Centre provides gym-goers unique access to nutritional advice and fun gaming apps without ever having to touch the displays. With the integration of Intel® AIM Suite, the system can also measure audience behaviour and viewer demographics, all with one 3D camera.

Kin Design



Kin Design is a research led, interaction design studio. In July 2011 the National Maritime Museum opened the Compass Lounge to the public as part of their major new development - The Sammy Ofer Wing. Kin designed the Compass Lounge to be a comfortable space where visitors can explore the museum's vast archive and understand its contemporary relevance through digital technology.

The space has three key interactive experiences within it, each designed to disappear into the architecture of the environment, creating a seamless integration with the walls and furniture. One of these interactives is The Horizon Screen and can be seen at the NEC Showcase. It is a five screen panoramic display designed to communicate the breadth of the archive - 4000 high resolution images form a sea of content that flows towards the viewer. The images are organised by their visual similarity to each other and visitors can roll through the content using a giant trackball.

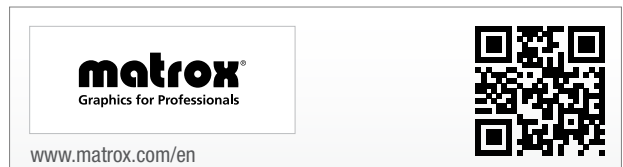
Lifesize



At the NEC Showcase, LifeSize, a pioneer in HD video communications, demonstrates its latest virtualised video platform and cloud-based HD video solution so that anyone can do business anytime, anywhere on multiple devices.

LifeSize® ClearSea™ is an enterprise-class client/server solution for desktop and mobile video collaboration, enabling companies to have face-to-face communication with their customers, partners and employees. Teams can connect via multiple devices simultaneously and be reached with a single number. LifeSize® Phone™ Second Generation is the new HD video and audio conference phone, featuring an intuitive touch-screen interface so simple that anyone can use it. The LifeSize Phone allows users to quickly share content, control cameras, change layouts and add callers with ease. LifeSize® 220 series endpoints are superior quality video communications based on open standards and interoperability to ensure maximum return on investment. LifeSize® Video Center is a powerful one-button HD video live streaming, recording and auto-publishing solution, ensuring live and on-demand videos are easily accessible from any location on multiple devices. LifeSize® UVC Platform™ consolidates the capabilities of multiple video solutions and makes them instantly available from one common interface.

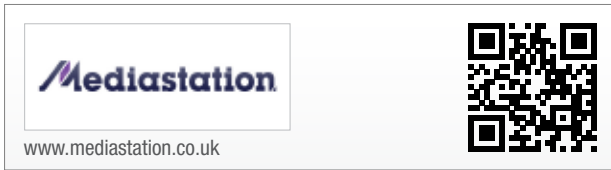
Matrox Graphics



Matrox Graphics provides an extensive range of professional multi-display graphics solutions, including add-in graphics cards, external multi-display adapters, KVM extenders and video wall controller boards.

Demonstrating the synergy of NEC Solution Partners working together, Matrox empowers multi-monitor configurations with DAS, Lifesize, Exterity and Visiosign in the Professional Office zone. In conjunction with Harris and PSCo, Matrox will drive a 4x4 signage wall in portrait mode.

Mediastation



Mediastation is a creative production specialist bringing digital experiences to life through the latest technology. From initial creative idea, through to production and support, Mediastation devises and delivers creative applications that promote brands in innovative ways. Demonstrating this, Mediastation is showing some of its latest products which offer new ways of making digital signage interactive using gesture control.

Mentor Distribution



Mentor Distribution is a specialist franchised distributor and manufacturer of display products, supplying the complete range of NEC displays. Mentor manufactures and supplies fully integrated touch screens of various technologies into NEC Displays and has recently developed their own laser based multi-touch product which answers all the application specific questions associated with the different technologies available and finally offers a one stop solution covering all scenarios.

Mentor also manufactures glasses-free 3D display products fully integrated into the NEC 46" and 55" backlit LED Displays. In partnership with IPONT UK, Mentor can provide complete glasses-free 3D solutions including the display, content and players.

Midwich



True Colours Distribution and Midwich Security, both divisions of Midwich, will be demonstrating connectivity solutions using high-end devices from Dexon as well as security equipment.

A developer and manufacturer of viewers, splitters, edge blending video processors, video wall controllers and video wall servers, Dexon components are being used by True Colours to demonstrate the operation of a video wall at the NEC Showcase. As experts in the area of technical connectivity, the staff at True Colours Distribution will be on hand to discuss all aspects of technical audio-visual solutions.

Also at the Showcase, Midwich Security is using the video wall to demonstrate CCTV cameras. Midwich Security supplies large-scale solutions for industrial, commercial and government applications and staff are on hand to discuss how users can utilise the services of other Midwich brands for more security solutions such as access control, auto-ID, barcode printing and scanning and voice evacuation.

NEC IT Solutions



NEC IT Solutions, the European IT services arm of NEC Corporation, is a provider of intelligent IT solutions designed to enhance business processes and technically empower customers within the public and private sectors. NEC IT Solutions engages with medium and large enterprises on a national and multi-national basis, delivering customised solutions utilising innovative IT, voice, data, mobile, video networking and biometric technologies, from within NEC and from best-in-class industry vendors.

NEC is showcasing some of its security and public safety focused biometrics solutions, marketed under the brand name of NeoFace. NEC's NeoFace suite offers multiple solutions specifically designed to support and optimise surveillance, identification, security operations as well as other operational processes such as monitoring the movement and volume of people in public areas, all through the use of face recognition. NEC's NeoFace is the most accurate facial recognition software available today, as independently verified by the US National Institute of Standards and Technology (NIST). These tests also demonstrated that NeoFace provides the fastest matching capability that is the most resistant to variants in angle, age and race.

NEC Infrontia



The unified communications division of NEC offers telephony platforms and applications from entry level to enterprise. Combining global vision and expertise with local presence, NEC has extensive experience in providing UC solutions, including advanced Microsoft® application integration.

NEC Infrontia is attending the NEC Showcase to demonstrate how innovative communications combined with NEC Display Solutions can transform the way a business works. Specialists in improving productivity and ROI, NEC shows why their highly scalable telephony solutions and intuitive applications should be right at the heart of any business to make it easier to connect with the right people.

Demonstrating the impressive Rich Presence application, users are empowered with a 'bird's eye view' of their workforce, displaying the real-time status of the entire team in a single screen. In addition, NEC is demonstrating powerful wallboards offering live queuing information, staff activity and customisable news feeds. Furthermore, two products are being shown which help to break down communications boundaries - an application with the collaboration potential to bring remote workers together with video conferencing and application sharing, also the intriguing M155 Messenger device that offers hands-free voice and messaging.

Netpractise

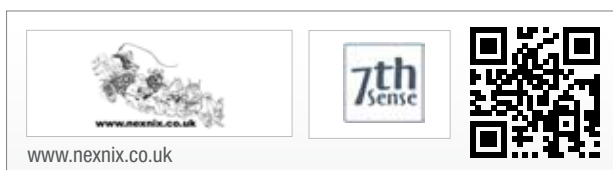


Netpractise is demonstrating an interesting variety of innovative digital signage and Customer Flow Management solutions at the Showcase. Netpractise welcomes visitors to discuss pioneering and diverse uses of their DigitalProMedia software which is driving projects in a wide range of industries including corporate, banking and retail with a focus on transportation.

The Customer Flow Management (CFM) and Operational Information System (OIS) demonstrate Netpractise's ability to work with partners to deliver tailored solutions to the end user. The stability and versatility along with the option of project lead development are key to their client's success.

Using both NEC large format and desk top displays, Netpractise is showing a live demonstration of a UK wide rail solution using the Operational Information System (OIS).

NexNix



NexNix is a multi-platform hardware and visual display solutions provider for a broad range of markets covering the financial sector, local government, retail, marine, simulation and AV industries.

NexNix is a licensed distributor of Go-Dome™, a brand that specialises in portable planetarium dome theatres and mirror projection equipment for immersive presentations and events and it is on display at the Showcase. Outside the Dome, NexNix is presenting its Virtual Mannequin, a life size projection of a person giving 24/7 messages ideal for promoting special offers, in-store promotions or being used as entertainment at special events.

OneLAN



ONELAN Digital Signage is attending the NEC Showcase with its Net-top-box (NTB) which is used in numerous market sectors from education, health and government to shopping malls and museums. Products on show include the ONELAN Net-Top-Box NTB6007, NTB6107 video wall and NTB650 with stream in capabilities, also ONELAN's remote control and Data Collection Engine (DCE).

Peerless-AV



Peerless-AV, manufacturer of AV mounting products, is presenting a complete range of mounting solutions from feature packed wall mounts for individual screens to multi-screen video wall trolleys for mobile applications.

The brand new SmartMount XT range offers versatile and easy to install mounting whilst the new Peerless-AV mobile, multi-screen video wall display stands are an innovative solution for creating eye-catching backdrops for exhibitions and meetings.

Peerless-AV is also presenting a comprehensive selection of single screen stands to accommodate displays with vertical adjustment for positioning the screen at the required height and tilt to achieve the optimal viewing angle. The 'Best of Infocomm' winner DS-VW765 digital signage mount is on show and will demonstrate how Peerless-AV has taken all the tedious calculations out of the installation of any video wall array with custom, screen specific wall plate spacers. Limitless display configurations are achievable in both portrait and landscape orientations, with the assurance of perfect alignment and a sleek, flush appearance even over problem walls thanks to multi-point, tool-less micro adjustment in 3 planes.

PSCo Technical Distribution



PSCo Technical Distribution offers a product and technical service and support resource to its network of partners, enabling them to specify, install and support video wall solutions of any size and complexity. PSCo Technical Distribution has secured the UK's first delivery of NEC X463UN screens for partner projects and has created the show-stopping 16-screen (four and a half-metre) portrait video wall in the DooH Zone at the Showcase demonstrating the high impact and immersive power of the video wall. The 4x4 configuration of NEC's new X463UN, it's 46"- ultra-narrow bezel, public display with direct LED backlight, is mounted on bespoke PSCo brackets and driven by a combination of Harris Infocaster™ players and a high-performance Matrox Mura video wall controller to enable each display to be driven at its full native resolution of 1080p.

PSCo has experience with large-format and video wall display technologies and has partnered leading integrators on flagship installations such as The Grange Hotel St. Pauls, high-prestige Candy and Candy property developments, Foxtons, Hugo Boss, Westfield Stratford, HSBC and The Ivy.

RA Technology



RA Technology is an AV installation equipment manufacturer and solutions provider offering a comprehensive range of universal and brand specific products for multi-media projectors, flat screens and audio solutions, plus a bespoke product design and manufacturing service.

RA Technology can be found in the Education zone with the RA iTouch trolley, a programmable height adjustable power lift trolley for use with touch screen technology, the RA Media Mate Mobile 65 height adjustable power lift trolley for use with flat screens up to 65" and the RA R2-3D height adjustable trolley for use with 3D multi-media projectors.

Scala

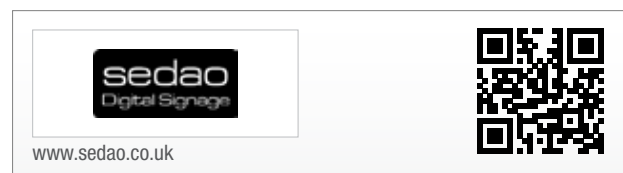


Scala, provider of software for digital signage networks, is showcasing their powerful way-finding solution suitable for large estates as recently

deployed at Canary Wharf station. This solution is complemented by the Scala airport information application for flight arrival and departure information, combined with the Scala Ad Management platform for managing the large advertising inventory associated with airports, both digital and static, all on the same platform.

The highlight of Scala's presence however is the NEC Arch. Here Scala is showcasing a variety of content, custom designed for a creative array of screens utilised in a unique way that should appeal to retailers. Visitors can utilise QR codes via their smartphones to enter a competition to win an iPod nano, sponsored by NEC. Additional content includes demonstrations of social media integration such as twitter, Linked in and Facebook.

Sedao



Sedao manufactures digital signage and message management systems providing a complete range of solutions including Linux hardware, Windows hardware, software only solutions, kiosks and bespoke systems.

Sedao can be found in the Education zone with its new 3Zone signage system created especially for primary schools and any budget sensitive requirement - the company invites visitors to take part in their 30 second learn-it challenge. Here visitors will also see Sedao/NEC OPS PC's for colleges and universities, plus many new software releases building on Sedao's education digital signage.

In the 3D and Leisure zone, Sedao is launching the new SAM player where visitors can see a demonstration of SAM's WiFi peer-to-peer synchronisation. The company is also showing their automated photo kiosk where photo souvenirs can be created, incorporating HD cameras, gesture control and a choice of touch screen sizes.

SMART



Steljes is presenting SMART collaborative technology solutions for meeting rooms, training rooms and workspaces which help to improve productivity and engagement.

In the Professional Office zone the SMART Board™ 8070i interactive display is built to encourage collaboration and enhance the way that teams share and work with digital information. In the Education zone, the SMART Notebook™ collaborative learning software enables teachers to create, deliver and manage high-impact interactive lessons using NEC and DisplayLite interactive LCD displays.

Smart Media Solutions



SMS develops and markets value-additive accessories for sound and vision to be used indoors or outdoors. Offering brackets and enclosures for screens and projectors, all products are designed to meet clear user-defined needs and environments in education, office and conference, retail and display, events and shows, media, hotel, public spaces and home use.

All of SMS products offer unique functionality and high quality for simple mounting and use, flexibility, interactivity, and integration with technology and furnishings.

At the NEC Showcase, SMS is showcasing future concepts from their innovative range of products including a mobile and manually height adjustable solution for the latest ultra-short throw projectors and a wheeled motorized solution for large touch screens. Also shown is the SMS VeriTable, a bracket which makes presentations more interactive for universities, architects and any company where people need to collaborate. displays.

TeamMate

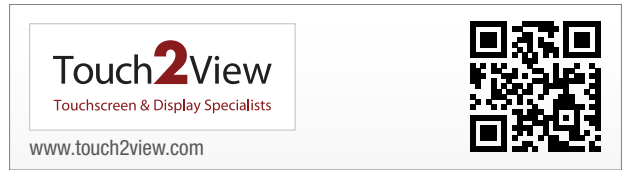


TeamMate offers a unique range of contemporary furniture solutions for business and learning environments. TeamMate is featuring in both the Education and Professional Office zones demonstrating new and innovative ideas for learning, collaborative engagement, high definition video conferencing and lecture capture systems. Each of these application examples will demonstrate the flexibility and practical approach by TeamMate, in particular with seamless integration of technology components and attention to cable management, creating a professional and conducive environment.

In the Professional Office zone, the TeamMate VariHite Presenter provides a convenient and professional solution for moving large format displays coupled to a SMART/NEC interactive display to create a collaborative tool.

The TeamMate WorksZone helps convert any space or meeting room into an accessible environment for video meetings as demonstrated with LifeSize with the latest in video communications technology and multiple image control. In the Education zone, TeamMate shows their WorkZones with Extron's 'Showme' solution and DisplayNote's iPad collaboration solution.

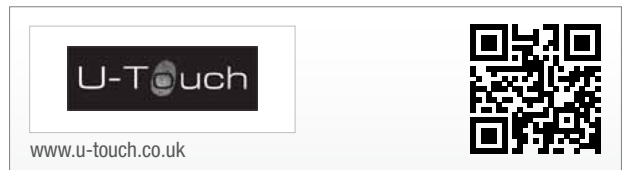
Touch2view



Touch2view is a specialist in display and touchscreen technology and creators of the Giant iTab. These innovative tablet solutions are fast becoming a new industry standard due to their ability to present Apps and app based content on a giant scale. This unique feature has the ability to draw the audience in as people associate the look and feel with familiar hand held devices, thus vastly improving the interaction between the consumer and the screen, a major plus for potential advertisers and content providers.

The Giant iTab's are available in a range of sizes and applications including retail, education, advertising, publishing, leisure, gaming, events and exhibitions and of course, anywhere where Apps and app based content has been created.

U-Touch



The U-Touch interactive video wall delivers industrial strength performance, reliability and flexibility. Using the latest infra-red touch technology enables up to 20 simultaneous touches for a true multi-touch experience. Using the best seamless displays on the market enables custom modular configuration, the wall can be arranged in any configuration of the customer's choice. This solution provides a stunning visual impact and the best large format touch solution for a variety of requirements.

U-Touch is showing two interactive video walls, a 3x2 (153") monster solution using a Unicol stand with special bracketing which supports the weight of the U-Touch screen separately ensuring none of the weight is on the displays. Also U-Touch is showing a 2x2 (93") solution demonstrating the versatility of the NEC product for both large and small video walls, with the added allure of interactivity.

U-Touch is also showing its all-in-one 65" integrated solution, incorporating an iPhone/iPod docking station, web cam and USB ports into the bezel for a truly user friendly multi-media option. Its 46" dual touch system with NEC's second generation P series displays and VisioSign signage player can be seen in the Education zone.

Visionpoint



Visionpoint, an AV solution provider, is showing a 'live' interactive touch through glass demonstration of their Touch247™ software displaying used vehicles. Incorporating SMS and QR functionality plus the latest 'Digi-Brochure' technology, this solution offers the ability to show dealer or 'group' stock in real time directly on to their store window.

The solution enables the user to request information by email or download directly to their Smartphone. Utilising an NEC high bright LCD panel and a capacitive touch foil, this system can be placed in many challenging 'windows out' environments.

Visiosign



VisioSign is showcasing the 'Corporate Wall' via its web-based, highly flexible, user friendly digital signage platform in the Professional Office zone. The InfoBoard® solution delivers information locally, or across the globe simultaneously on multi-content display screens which can be updated from any location with an internet connection. Updates to the solution itself are made automatically, to enable the customer's investment to maintain its state of the art credentials.

Software solutions from VisioSign can be used in conjunction with public display screens (including touch screens) to deliver key information, news and entertainment via text, images, video, flash, rss feeds and TV.

Clients as diverse as a primary school with 8 pupils, to a major food manufacturer with 85 brands worldwide use VisioSign solutions. The ability to promote a branded corporate image, as well as to present news and topical information, simply and simultaneously, is a key consideration amongst multi-location organisations. Many local authorities, for example, in the UK and Europe have picked up on the ability to deliver news efficiently and cost-effectively across a broad spectrum of end points, and are now using electronic notice boards, powered by InfoBoard®, to deliver information to schools, civic buildings and other public areas. Content can be added by any number of editors.

White Space Productions



White Space is a creative production management company providing live conference, exhibition and video production, specialising in bringing engaging 3D content to both the education and corporate markets. At the Showcase, WSP is using its marble arch pixel mapping solution to show some of its animation and building mapping capabilities.

3D-Hub is part of White Space Productions and is a community web site dedicated to promoting interactive 3D technologies to improve the classroom experience. Based on years of research to find the most effective techniques for the interactive presentation of teaching and training materials, 3D-Hub provides software for the display of 3D "virtual models" that can be manipulated, animated, and disassembled interactively. White Space Productions and NEC have been co-operating for a number of years to ensure that their entire range of 3D ready projectors are guaranteed to work with WSP proprietary software and content solutions.

The U Series, ultra-short throw 3D projectors, has set the standard for 3D schools projectors which WSP recommend and utilise for all demos and clients.

Wonderworks



Wonderworks delivers 3D holographic visual merchandising solutions that interact, interrupt and engage with the consumer with easy to use programmable real-time scheduling technology via a core platform of technology products.

At the Showcase, Wonderworks is presenting The VISTA™, a unique large-scale 3D holographic projection unit, which offers portable window, in-store and exhibition visual merchandising solutions. This high-definition video-based, easily erected modular 3D holographic projection unit is available in standard sizes including 2m, 3.5m and 5m, with bespoke sizing available.

CONTACT US:

NEC Display Solutions (UK) Ltd
NEC House
1 Victoria Road, London W3 6BL
Phone: +44 (0) 870 120 1160
www.nec-display-solutions.co.uk

Guy Phelps
Corporate Sales Manager
Mobile: +44 (0) 7736 890858
Email: guy.phelps@EMEA.NEC.com

Neil Hartigan
Channel Director
Mobile: +44 (0) 7736 890969
Email: neil.hartigan@EMEA.NEC.com

Neale Williams
Digital Cinema Products
Mobile: +44 (0) 7736 890985
Email: neale.williams@EMEA.NEC.com

Gill Slater
Marketing Co-ordinator
Mobile: +44 (0) 7768 105116
Email: gill.slater@EMEA.NEC.com

Freddie Elliott
Healthcare Sales Manager
Mobile: +44 (0) 7720 415831
Email: freddie.elliott@EMEA.NEC.com

Tina Attfield
Education Sales
Mobile: +44 (0) 7736 891020
Email: tina.attfield@EMEA.NEC.com

Tim Oliver
Public Sector Sales
Mobile: +44 (0) 7836 239236
Email: tim.oliver@EMEA.NEC.com

Steven Cotton
Colour & Media Sales Specialist
Mobile: +44 (0) 7736 891453
Email: steven.cotton@EMEA.NEC.com

Megan Sweeting
Press Enquiries
Mobile: +44 (0) 7860 927103
Email: megan.sweeting@EMEA.NEC.com

Jonathan Cooper
Business Development Consultant
Phone: +44 (0) 208 993 8111
Mobile 1: +44 (0) 7720 415868
Mobile 2: +44 (0) 787 933 9166
Email: jonathan.cooper@nec-displays.com



www.showcase-nec.com

This document is © Copyright 2012 NEC Display Solutions Europe GmbH. All rights are reserved in favour of their respective owners. The document, or parts thereof, should not be copied, adapted, redistributed, or otherwise used without the prior written permission of NEC Display Solutions Europe GmbH. This document is provided "as is" without warranty of any kind whatsoever, either express or implied. Errors and omissions are excepted.

NEC Display Solutions Europe GmbH may make changes, revisions or improvements in, or discontinue the supply of any product described or referenced in this document at any time without notice.

Empowered by Innovation

NEC